



Beauty  
Works®

The image is a full-page advertisement for Beauty Works Professional. It features two women with long, straight hair. The woman on the left has dark brown hair and is wearing a light orange, strapless, satin dress. The woman on the right has long blonde hair and is wearing a light-colored, strapless, sequined dress. They are standing in a room with ornate gold-colored wall decorations, including a large mirror and a chandelier. In the foreground, there are decorative floral arrangements with gold and white flowers. The overall aesthetic is elegant and high-end.

P R O F E S S I O N A L



# Beauty Works®

PROFESSIONAL

- 05 Why Beauty Works
- 06 Salon & Stylist Partnerships
- 10 Education
- 16 Professional Extensions
- 18 Micro Ring Extensions
- 19 Pre-Bonded Extensions
- 20 Tape Extensions
- 22 Weft Extensions
- 24 Clip-In Extensions
- 28 Ponytails
- 30 Haircare
- 32 Shampoos
- 33 Conditioners
- 34 Sprays & Serums
- 35 Bundles & Duos
- 38 Styling Tools
- 42 AERIS® Digital Hair Dryer
- 44 Professional Tools
- 48 Marketing Material
- 50 Colour Display
- 52 Colour Collection
- 54 Riviera Collection
- 56 Chocolatière Collection
- 58 Beauty Works Colour Collection

AS SEEN IN...

teenVOGUE

ELLE

marie claire

E

Good Housekeeping

GRAZIA

GLAMOUR

BAZAAR

VOGUE

COSMOPOLITAN



# WHY BEAUTY WORKS?

At Beauty Works, we provide luxury hair solutions that inspire confidence and empower you to look and feel your very best.

With over 10 years in the industry, Beauty Works are acclaimed and trusted worldwide as the world's leading hair extension brand. Providing flawless hair for over a decade. We're proud to say that our products have won big at Beauty Awards throughout our time in the industry.

Including awards from the 'Best Hair Extensions' by Marie Claire to being crowned at the Cosmopolitan Awards and recognized in the hair industry by Hair Magazine and The Beauty Awards. Our hair solutions are recognised by top beauty experts to the influencer community and championed by some of the world's most influential women.

So, you can buy with complete confidence.

Our salon and stylist partners have instant access to our award-winning hair, allowing for full creative control in achieving the perfect match for each and every client. Next day delivery is made possible with our inventory of hair on hand ready for stylists to purchase anytime online 24/7 through personalised accounts.







## SALON & STYLIST PARTNERSHIPS

---

New to Beauty Works? Start your hair journey with the biggest hair enhancement company in the world.

By partnering with Beauty Works, we guarantee support from our experienced business reps to grow your business. Not only that, all salon partners can enjoy exclusive benefits like stylist discounts, rewards through our partner reward scheme and early access to new product launches.





## NEW PARTNER REWARD SCHEME

	BRONZE	SILVER	GOLD	PLATINUM
<b>Minimum Quarterly Spend</b> (Excluding V.A.T)	No Min Spend	Min spend £3,000 each quarter	Min spend £9,000 each quarter	Min spend £18,000 each quarter
<b>Average Monthly Breakdown</b> (Excluding V.A.T)	No Min Spend	£1,000	£3,000	£6,000
<b>Discount on Hair</b>	Up To 25%	Up To 30%	Up To 33%	Up To 35%
<b>Discount on Aftercare</b>	Up To 30%	Up To 35%	Up To 40%	Up To 40%
<b>Discount on Electrical</b>	Up To 20%	Up To 28%	Up To 30%	Up To 35%
<b>Discount on Non Professional</b>	Up To 20%	Up To 25%	Up To 30%	Up To 33%
<b>Quarterly Rewards Allowance</b>	N/A	2% of spend (min reward £60)	3% of spend (min reward £270)	4% of spend (min reward £720)
<b>Aftercare Monthly Allowance</b>	N/A	Aftercare bundle worth £63 RRP	Aftercare bundle worth £103 RRP	Aftercare bundle worth £170 RRP
<b>Electrical Monthly Allowance</b>	N/A	Electrical worth £80 RRP	Electrical worth £190 RRP	Electrical worth £270 RRP
<b>In Salon Display</b>	N/A	Door Sign	Trophy & Door Sign	Trophy & Door Sign
<b>Social Content days with Beauty Works Team*</b>	No	Yes	Yes	Yes
<b>Free Standard UK Shipping</b> (3-5 Working Days)	N/A	On orders over £600.00 (Excluding V.A.T)	On orders over £550.00 (Excluding V.A.T)	On orders over £500.00 (Excluding V.A.T)
<b>Feature on Salon Locator</b>	No	Yes	Yes	Yes
<b>Dedicated Account Manager</b>	No	Yes	Yes	Yes
<b>Dedicated Trade Support Line</b>	No	No	Yes	Yes

**TERMS & CONDITIONS:** Quarterly allowance's and rewards must be redeemed within the first 14 days of a new quarter. Quarterly allowance rewards will only be applicable on achievement of the Quarterly target. Quarterly allowances can be redeemed on: Hair, Aftercare, Electricals, Education, Branded Salon Items. All values are calculated at RRP. Quarterly allowances and rewards can not be rolled over into the next quarter, and is only to be used as full payment and not part payment when used on hair. Quarterly allowances and rewards can only be shipped to the customer when added to a £350 ex VAT standard order. All quarterly targets and orders are calculated excluding VAT. Monthly allowances must be redeemed within the first week of the following month. Monthly allowances are only redeemable on achievement of the monthly target. All monthly targets and orders are calculated ex VAT. Monthly allowances can only be shipped with a standard £350ex VAT order. All monthly allowances are calculated at RRP. Allowances and rewards can only be redeemed through your Account Executive, Desk Based Account Executive or Customer services. Ad hoc monthly promotions will be available at all levels throughout the year. Launching Summer 2024 - Diamond Level with enhanced benefits and rewards. Discount on non professional items such as clip in range / ponytails are at a variable discount rate. Gift sets and limited edition sets will have their own promotional discount. Salons will remain in their current converted level until 31 December 2023 at which time they will move to the correct level. From 1 January 2024 reward levels will be reviewed at the end of each quarter. Content days - Available through The Account Executive. Beauty Works reserve the right to amend The Partner Rewards Scheme and The T&C's at anytime. The Aftercare Bundle Allowance will be made up of: Pearl Nourishing Mask 500ml (RRP £19.99), 1 Litre Pearl Nourishing Shampoo (RRP £24.99), 1 Litre Pearl Nourishing Conditioner (RRP £24.99), 250ml Clarifying Shampoo (RRP £9.99), 500ml Pearl Nourishing Shampoo (RRP £16.99), 500ml Pearl Nourishing Conditioner (RRP £16.99), 250ml Pearl Nourishing Shampoo (RRP £9.99), 250ml Pearl Nourishing Conditioner (RRP £9.99), 250ml 10 in 1 Miracle Spray (RRP £9.99), 250ml Blowdry Crème (RRP £12.49), 250ml Restore Mask (RRP £12.49). The Electrical Allowance will be a choice from: Pro Styler (Black Pro Line RRP £80.00), Waver (Black Pro Line RRP £106.67).

## BENEFITS OF BEING A SALON PARTNER

- Providing clients with the UK's leading hair extension brand
  - Exclusive personalised discount on all trade orders
  - Partner events and launches
- Customer service and account management support daily
  - Education and training on salon professional methods
  - Next day delivery throughout the United Kingdom
- Feature on our salon locator to increase bookings in your postcode
  - Social media exposure with a reach of over 1 million







## EDUCATION

---

Our Education program is trusted by some of the most prestigious hair salons in the UK, providing stylists with cutting-edge hair extension techniques. Our comprehensive training equips you with the professional skills necessary to excel as an extensions specialist. In addition to training you to the highest standard, you'll gain a certified qualification approved by Habia, a recognised and regulated body in the industry, ensuring that you can confidently offer your new skill set straight on the salon floor.



# EDUCATION

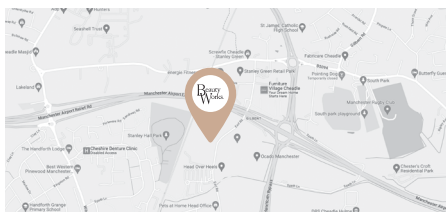
Beauty Works offers premium hair solutions using the UK's leading hair extensions methods, designed to inspire confidence and empower your clients to look and feel their absolute best. Take a fresh approach to your business by joining us and let us lead you in your learning quest and make this year your year to grow and build your business revenue.

## BEAUTY WORKS PROFESSIONAL COURSE

- How to complete the perfect client consultation
- Choosing the correct method and suitability for your client
- How to work safely and efficiently
- Hair extension application, maintenance & removal
- Seamless colour matching & blending techniques
- Hair extension industry knowledge and latest trends
- How to add non chemical colour and highlights to your clients hair
- How to price your services to increase revenue within salon
- Social media & marketing tips for your business
- Aftercare - our products and how to get the most out of your extensions
- Managing your customers expectations

# TRAINING LOCATIONS

Our headquarters are conveniently situated in close proximity to Manchester Airport and the city centre, allowing for convenient travel arrangements. Additionally, we have a presence in central London, placing us at the heart of the city's bustling hub.



**MANCHESTER**  
**BEAUTY WORKS HQ**  
Unit 12, Oak Green,  
Stanley Green Business Park,  
Cheadle, SK8 6QL

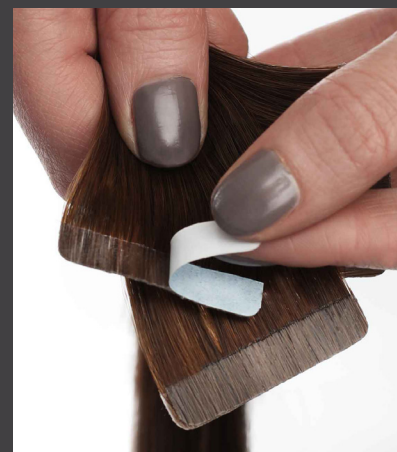


**LONDON**  
**DANIEL GALVIN**  
33 George Street,  
London, W1U 7ET



# ULTIMATE TAPE COURSE

Our express method for quick and easy application, this revolutionary method allows stylists to add extensions in minutes allowing you to create a full fringe, layers or full head of extensions in under an hour.



This extension method can also be used to add length, volume and personalisation of colour, enabling you to add custom blend and personalized colour enhancements

- Tape application
- Tape removal
- Tape maintenance

**£499.99 | DURATION: 5.5 HRS**  
FOR STYLISTS NVQ2, OR EQUIVALENT & ABOVE



## CREATIVE MIX COURSE 1

This innovative course teaches the efficient and swift application of Tape and Weft extensions, catering to the needs of both clients and salons on the go.



- **BW WEFT™** - the most popular weft application method known for its gentle on your client's natural hair.
- **MICRO RING WEFT** - an innovative stitch-free method adding length and volume to the hair without the use of thread.
- **TAPE** - the quickest method for application and removal prioritising efficiency without compromising on quality.

**£649.99 | DURATION: 7.5 HRS**

FOR STYLISTS NVQ2, OR EQUIVALENT & ABOVE

## CREATIVE MIX COURSE 3

Showcasing three types of hair extensions methods this course will teach you three methods; Tape, Nanobond® and Flat tip extensions, to cater to a variety of client preferences and hair types.



- **TAPE**
- **NANOBOND®**
- **FLAT TIPS** - This traditional method, using premium Italian keratin, provides long-lasting results requiring minimal maintenance appointments and providing comfort and freedom of movement.

**£649.99 | DURATION: 7.5 HRS**

FOR STYLISTS NVQ2, OR EQUIVALENT & ABOVE

## CREATIVE MIX COURSE 2

Learn the art of seamlessly integrating various types of extensions, including Stick tip, Nanobond® and Tape extensions which allow for effortless, natural movement ensuring they flow naturally and with ease like your client's own hair.



- **TAPE**
- **STICK TIPS** - A popular alternative for extensions lovers that want to avoid sew-in wefts, adhesive tapes or hot glue methods.
- **NANOBOND®** - The most discreet method in the hair extensions.

**£649.99 | DURATION: 7.5 HRS**

FOR STYLISTS NVQ2, OR EQUIVALENT & ABOVE

## CREATIVE MIX COURSE 4

By understanding the various extension methods and their unique attributes, you can mix and match them creatively to achieve hybrid blends, helping to achieve your client's desired outcome and enabling you to offer tailored solutions enhancing your client's natural beauty.



- **BW WEFT™**
- **MICRO RING WEFT**
- **NANOBOND®**
- **STICK TIPS**

**£649.99 | DURATION: 7.5 HRS**

FOR STYLISTS NVQ2, OR EQUIVALENT & ABOVE





# PROFESSIONAL EXTENSIONS

---

Beauty Works hair extensions are designed with the professional in mind. Our semi-permanent methods cater for salon and stylists, offering a method to suit every client's hair. Investing in high-quality hair extensions allows stylists to receive multiple re-application appointments and your clients returning.

Our methods have been in the marketplace over 10 years, providing stylists with a portfolio of award-winning designs to ensure their business is a success.

Discover our multi award winning Invisi@Tape hair extensions, designed to mimic the natural hair. To our salon renowned Slimline® Tape in hair extensions, an influencer and beauty guru favourite.

Experience beautiful bonds with our collection of individual extensions, stylists can precisely add to specific areas for custom fullness and length.

Crowned at the Marie Claire Hair Awards as "best in the business" you will be sure to find the perfect method to build your extension business.

Try our weft extensions, featuring signature designs to Beauty Works, allowing stylists to avoid glue or chemicals with our Flat Track Weft® design unique to Beauty Works. Users can expect luxurious length and incredible volume with seamless smooth results for every client.

**With an extensive collection of colours and length options unique to only Beauty Works. Stylists can enhance length, build volume or create colour transformations.**



## MICRO RINGS EXTENSIONS

Develop a long-lasting business model with micro ring hair extension services. With no heat or glue, this method is ideal for clients who love length and volume without chemicals or heat being applied to the natural hair. With more skilled placement and longer lasting results, salon stylists can expect higher return on investment for the individual methods. Our collection of micro ring hair extensions include our award-winning Nanobond® and Stick Tip hair extensions using our Celebrity Choice® collection of hair. Crafted using 100% Remy human hair, our hair is specifically processed to ensure that the protective layer of the cuticle remains intact and faces the same direction from root to tip.



### CELEBRITY CHOICE® NANOBOND®

Marie Claire Awards winner 2022, our most undetectable non-glue hair extension technique available. Our iconic Nanobond® changed the way micro ring hair extensions look and feel. The damage free method of hair extensions allows stylists to apply extensions with a nano ring applied at the root of the natural hair. Threading the natural hair through the ring and securing into place.

#### LENGTH OPTIONS:

- 16" (0.8G per bond)
- 18" (0.8G per bond)
- 20" (0.8G per bond)
- 24" (1G per bond)

#### • 50G per pack

#### HAIR TYPE:

- 100% cuticle Remy hair
- Reuse every 10-12 weeks



### CELEBRITY CHOICE® STICK TIP

These Individual extensions can be used to precisely add to specific areas for custom fullness and length. An ideal method for adding highlights and pops of colour. Hair is gathered into little tips and applied using copper micro rings. Without heat or glue, Stick Tip hair extensions are a low-maintenance salon professional extension system. A popular alternative for extension lovers that want to avoid sew in wefts, adhesive tapes or hot glue methods.

#### LENGTH OPTIONS:

- 16" (0.8G per bond)
- 18" (0.8G per bond)
- 20" (0.8G per bond)
- 24" (1G per bond)

#### • 50G per pack

#### HAIR TYPE:

- 100% cuticle Remy hair
- Reuse every 10-12 weeks

## PRE-BONDED EXTENSIONS

Purchasing high quality hair extensions allows the stylist to receive multiple reapplication appointments that will increase their revenue whilst keeping clients returning satisfied. Beauty Works Flat Tip Extensions are pre-bonded hair extensions made with specially formulated discreet keratin bonds. Our innovative bond formula is the secret to long lasting pre-bonded extensions, retaining all hair extension strands within the bond, with little to no shredding. Each 1g strand is the perfect weight of hair to add length, colour or volume, designed for extreme durability yet gentle on the hair.



### CELEBRITY CHOICE® FLAT TIP

Flat Tip extensions are a comfortable, flexible and discreet pre-bonded professional extension method. Our Keratin bond formula is pre-tipped onto our signature Celebrity Choice® hair. Resilient against elements such as water and washing bonded hair extensions are ideal for clients who prefer wearing a method that is permanent and more hard-wearing than other methods.

#### LENGTH OPTIONS:

- 16" (1G per bond)
- 18" (1G per bond)
- 20" (1G per bond)
- 24" (1G per bond)

#### • 50G per pack

#### HAIR TYPE:

- 100% cuticle Remy hair
- Reuse every 10-12 weeks





# TAPE EXTENSIONS

Since 2016 our tape extensions have shaped the hair extension market; our designs are best in class. Proving to be the fastest extension method for salon stylist and clients alike stylist can enjoy profitable income with repeat customer from frequent refit appointments, creating a reliable customer base. Crafted using healthy, cuticle retained Remy human hair that remains tangle free throughout its lifetime. Clients can expect long lasting shine and lustre with hair that washes and dries tangle free.



## SLIMLINE® TAPE

Unlike other tape-in hair extensions, Slimline® tape offers a matt appearance at the root, meaning they're more discreet and users are free to style their hair up or down without extensions feeling bulky or uncomfortable. Manufactured with our exclusive tape formula, the medical grade tape remains intact and is removed gently for reapplication.

### LENGTH OPTIONS:

- 14" (48G - 20 pieces)
- 16" (48G - 16 pieces)
- 18" (48G - 16 pieces)
- 20" (48G - 16 pieces)
- 22" (48G - 16 pieces)
- 28" (48G - 16 pieces)

### HAIR TYPE:

- 100% cuticle Remy human hair
- Fast application and easy maintenance
  - Reuse every 4-6 weeks
  - Pre-taped

## INVISI® TAPE

Invisi® Tapes are globally recognised as the go-to extension for the most invisible feel. The invisible weft technology uses a super thin silk crafted structure, holding each strand of hair together. Adding vibrant colour, beautiful shine and long length, Invisi® Tape is designed so users can style hair up or down to suit busy lifestyles. The mesh tab mimics the natural re-growth of the hairs root, virtually disappearing into the hairline.

### LENGTH OPTIONS:

- 18" (48G - 16 pieces)
- 20" (40G - 12 pieces)
- 24" (48G - 16 pieces)

### HAIR TYPE:

- 100% cuticle Remy human hair
- Fast application and easy maintenance
  - Reuse every 4-6 weeks
  - Pre-taped
- 9 month guarantee



# WEFT EXTENSIONS

Explore the benefits of offering a hair extension service in your salon with no heat, no glue or no chemicals. Beauty Works offer a unique range of salon quality weft hair extensions. Select from a variation of over 40 bespoke colours in a variety of densities to suit fine, medium, thick hair. With our market leading signature designs stylists can expect salon clients to return for reapplication every 6-8 weeks, meaning it's a salon service that leads to continuous and consistent return. Whether it's the volume or length weft extensions offer or the fuss-free application, clients will be walking out of your salon with complete hair confidence.



## CELEBRITY CHOICE® WEFT

Beauty Works original Weft Celebrity Choice® launched over 10 year's ago and remains a best seller for salon professional application. Made with 100% Remy human hair to retain moisture and shine throughout its lifespan. Celebrity Choice® hair delivers soft, silky straight hair that is manageable for styling and blends seamlessly.

### LENGTH OPTIONS:

16" (120G)  
18" (120G)  
20" (120G)  
22" (120G)

### HAIR TYPE:

- 100% premium Remy hair
- Double Drawn from root to tip
- Reuse every 6-8 weeks



## GOLD DOUBLE WEFT

Our thickest hair extension weft yet and our ultimate in premium Remy human hair. Long lasting, tangle free and super thickness every time. Designed to maximise volume, the Beauty Works GOLD Double Weft is a revolutionary weft design unique to Beauty Works. Tried and tested by respected hair extension experts in the industry, our unique lace design allows us to deliver super thick extensions with more hair but less weft.

### LENGTH OPTIONS:

18" (150G)  
20" (150G)  
22" (150G)  
24" (220G)

### HAIR TYPE:

- 100% Premium Remy hair
- Double Drawn from root to tip
- Reuse every 6-8 weeks



## GOLD FLAT TRACK® WEFT

Our breakthrough weft is incredibly thin, flat and light, making it our most invisible and flattest weft yet. Featuring a revolutionary half weft design that adds maximum volume, with a discreet and comfortable design. 100% Remy, Double-Drawn Human Hair is compacted onto a flat PU and lace weft, designed to prevent shedding and withstand washing. Users can expect no return hair for no scalp irritation, which allows stylists to deliver super flat and comfortable extensions to the hair line.

### LENGTH OPTIONS:

16" (48G) - 12" width  
18" (58G) - 11" width  
20" (68G) - 15" width  
22" (78G) - 18" width  
24" (88G) - 20" width

### HAIR TYPE:

- 100% premium Remy hair
- Double Drawn from root to tip
- Reuse every 6-8 weeks

Stylists can order next day delivery from our Colour Ring from our extensive collection of stunning shades.





A full-page photograph of three models with long, wavy hair, each wearing a different style of hair extension. They are posed in a room with ornate gold-framed mirrors and artwork. The model on the left has blonde hair and wears a silver sequined dress. The model in the center has dark brown hair and wears a white two-piece outfit. The model on the right has light brown hair and wears a white sequined dress.

## CLIP-IN EXTENSIONS

For an instant transformation, offering our clip-in hair extensions in salon creates instant revenue and customer satisfaction.

Discover a volume and density to suit your client's hair type with our Deluxe or Double Hair Sets in a variation of lengths and stunning shades. Crafted with 100% real Remy human hair, our clip-ins can be washed and are easy to style. Offering sets to suit different hair types, Beauty Works offer both 140g Deluxe Clip-Ins for a natural finish or our 180g-290g Double Hair Sets for fuller, thicker sets.



# CLIP-IN COLLECTION



## DOUBLE HAIR SET

Our thickest and fullest set. The unique six piece system, uses a lace weft structure to span the full width of the head to give maximum coverage. The hand selected hair is compacted onto easy to use flat weft strips. Allowing you to wear your hair in a variety of hairstyles that our completely discreet and lightweight. Featuring a protective silicone layer on each clip to cushion your natural hair and protect from breakage.

### LENGTH OPTIONS:

- 18" (180G)
- 20" (210G)
- 22" (220G)
- 26" (290G)

### HAIR TYPE:

- 100% Remy human hair

### PACK CONTAINS:

- 11" Large wefts x 2
  - 8" Mid-size wefts x 2
  - 1.5" Face framing wefts x 2
- (26" pack contains additional large weft)



## DELUXE CLIP-INS

Our natural volume extension set, is compacted on to three easy to apply clip-in wefts. Perfect for a big night out or every day glam these clip-in extensions are a cost effective way of achieving hair that you can apply yourself. The three piece system, uses a lace weft structure.

### LENGTH OPTIONS:

- 16" (140G)
- 18" (140G)
- 20" (140G)

### HAIR TYPE:

- 100% Remy human hair

### PACK CONTAINS:

- 11" large wefts x 2
- 8" Mid-size wefts x 1



## DOUBLE HAIR SET - HALF WEFT

Boost existing hair extensions or add to natural lengths to enhance volume or mix in extra colour. Beauty Works Double Hair Set Weft is a one strip Weft which allows you to apply hair instantly.

### LENGTH OPTIONS:

- 18" (50G)
- 22" (60G)

### HAIR TYPE:

- 100% Remy human hair

### PACK CONTAINS:

- 11.5" large weft x 1



## BEACH WAVE DOUBLE HAIR SET

Our Beach Wave Double Hair Set clip-ins offer express mermaid waves in minutes. Each pack contains a full set of hair wefts containing ten easy to apply clip-in pieces. Made using 100% Remy human hair, which keeps the cuticles intact. Choose from a selection of balayage, rooted or multi-tonal hair blends to enhance your colour. Using special technology, these hair extensions can be washed up to 30 times and bounce back to its beachy curl once dried. Simply wave your own natural hair to match to get the textured beachy wave.

### LENGTH OPTIONS:

- 18" (180G)
- 22" (220G)

### HAIR TYPE:

- 100% Remy human hair

### PACK CONTAINS:

- 8" Large weft x 1
- 7.5" Large weft x 1
- 6" Mid-size wefts x 2
- 4" Mid-size wefts x 2
- 1.5" Face framing wefts x 4





# PONYTAIL COLLECTION

Retail a collection of instant application hairpieces, ponytail extensions can instantly add volume, texture and length to transform your look. They provide the ideal solution for thin and short hair and are easily concealed. Discover our range of luxury clip-in ponytails available in 18", 20", 24" and 26" lengths. Made from 100% Remy human hair.

NEW



HALF-UP HAIR SET  
CLIP-IN X MINI PONYTAIL

Designed to recreate the iconic half-up hairstyle from home, this ready to wear set features a set of clip-in extensions plus a clip-in ponytail piece. With 3 ways to style, the set offers our most versatile set yet - where it can be worn as a full half-up hairstyle, clip-ins only or just the ponytail.

**LENGTH OPTIONS:**

- 18" (200G)
- 22" (260G)

**HAIR TYPE:**

- 100% Remy human hair

**PACK CONTAINS:**

- 10.5" Large weft x 1
- 7.5" Mid-size wefts x 2
- 1.5" Face framing wefts x 2
- Lightweight pony x 1



SUPER SLEEK  
INVISI® PONYTAIL

Instantly add extra long length, thickness and volume with the Beauty Works Invisi® Ponytail. This ponytail behaves and feels just like your own hair. Wave it, style it, wash it just like your own hair, for a seamless blend.

**LENGTH OPTIONS:**

- 18" (110G)
- 26" (160G)

**HAIR TYPE:**

- 100% Remy human hair

**PACK CONTAINS:**

- Pony x 1



BEACH WAVE  
INVISI® PONYTAIL

Mermaid waves made easy! Shop pre-curved 20" 120g beach wave clip-in ponytail hair extensions. Made from 100% Remy human hair.



INSTA BRAID  
PONYTAIL

Upgrade your pony to ultimate lengths with 24" 105g clip-in ponytail braid hair extensions. Made from 100% Remy human hair.

**LENGTH OPTIONS:**

- 20" (120G)

**HAIR TYPE:**

- 100% Remy human hair

**PACK CONTAINS:**

- Pony x 1

**LENGTH OPTIONS:**

- 24" (105G)

**HAIR TYPE:**

- 100% Remy human hair

**PACK CONTAINS:**

- Pre-sectioned pony x 1







## HAIRCARE

---

Keep your hair looking healthier for longer with the Beauty Works haircare range. Covering many hair concerns with sulfate, SLS and paraben free, vegan friendly and After Sun colour-fade ranges. Beauty Works offers the perfect solution with a selection of haircare specifically formulated with essential ingredients that have been developed to extend the lifespan and performance of your hair extensions. For hair lacking in strength, hydration and nourishment, Beauty Works has argan and macadamia oil treatments and hair masks that will breathe life back into your tresses. Also, our best-selling Anti-Yellow Shampoo is a must-have to neutralise yellow and brassy tones, reducing the appearance of discolouration and giving shine to dull hair.



## SHAMPOOS



RRP £11.99  
Pearl Nourishing Argan Oil  
Shampoo (Sulphate Free)  
30ml / 50ml / 250ml / 1L



RRP £11.99  
Pearl Nourishing Argan Oil  
Shampoo  
30ml / 50ml / 250ml / 1L



RRP £11.99  
Deep Cleansing Clarifying  
Shampoo  
250ml



RRP £13.99  
Anti-Yellow Shampoo  
30ml / 100ml / 250ml / 1L



RRP £12.00  
Anti-Orange Shampoo  
30ml / 100ml / 250ml / 1L

## CONDITIONERS & TREATMENTS



RRP £11.99  
Pearl Nourishing Argan Oil  
Conditioner  
30ml / 50ml / 250ml / 1L



RRP £23.99  
Pearl Nourishing Argan  
Oil Mask  
30ml / 50ml / 250ml / 500ml



RRP £12.00  
Anti-Yellow Conditioner  
30ml / 50ml / 250ml / 1L



RRP £12.00  
Anti-Orange  
Conditioner  
30ml / 50ml / 250ml / 1L



RRP £11.99  
Brass Banish 5 Minute Mask  
100ml / 250ml



RRP £11.99  
Cool Covers Mask  
100ml / 250ml



RRP £14.99  
Restore Mask  
30ml / 100ml / 250ml



RRP £14.99  
Blowdry Crème  
30ml / 100ml / 250ml



## SPRAYS & SERUMS



RRP £11.99  
10-in-1 Miracle Spray  
50ml / 250ml



RRP £11.99  
Heat Protection Spray  
50ml / 250ml



RRP £16.99  
Dream Shine Spray-On  
Humidity Shield  
50ml / 300ml



RRP £11.99  
Argan Serum  
5ml / 30ml / 90ml



RRP £14.99  
Anti Frizz Serum  
50ml / 150ml



RRP £14.99  
Texturising Spray  
100ml / 250ml



RRP £14.99  
Invisible Dry Shampoo  
300ml



RRP £14.99  
Super Hold Hair Spray  
100ml / 300ml

## BUNDLES & DUOS

NEW



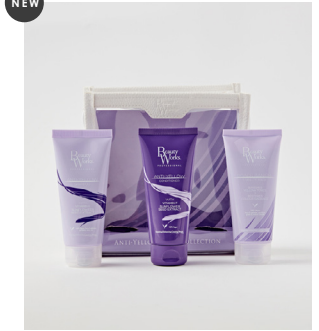
RRP £30.00  
After Sun Anti-Colour  
Fade Trio Set

NEW



RRP £30.00  
After Sun Discolouration  
Treatment Trio Set

NEW



RRP £25.00  
Anti-Yellow  
Mini Collection

NEW



RRP £14.00  
Dream Duo Gift Set

NEW



RRP £30.00  
Hero Gift Set



RRP £13.00  
Travel Set - Argan  
Moisture Repair  
(Sulfate Free) 50ml



RRP £44.99  
Pearl Nourishing  
Argan Moisture Repair Kit  
250ml



RRP £44.99  
Pearl Nourishing  
Argan Moisture Repair Kit  
(Sulfate Free) 250ml



RRP £13.00  
Travel Set - Argan  
Moisture Repair  
50ml



## BUNDLES & DUOS



RRP £  
Argan Oil Gift Set



RRP £21.59  
Argan Serum 90ml  
And Pearl Nourishing Mask  
250ml Bundle



RRP £29.99  
Styling Heroes  
Gift Set



RRP £22.00  
Pearl Nourishing Duo  
(Sulfate Free) 250ml



RRP £22.00  
Pearl Nourishing Duo  
250ml



RRP £26.09  
10-In-1 Miracle Spray 250ml  
And Dream Shine 300ml Bundle

## BRUSHES



RRP £10.00  
White Vegan Bristle Brush



RRP £25.00  
Large Paddle Brush



RRP £19.99  
Medium Oval Brush







## STYLING TOOLS

---

Beauty Works' award-winning styling tools have been featured in publications including Cosmopolitan and the Evening Standard. With awards including the "Best Curling Tong" at the Cosmopolitan Wards 2020, "New Hair Styling Hero" at the ASOS Awards 2019 and "Best Styling Tool of 2019" at the HAIR AWARDS 2019 and recommended by Vogue Magazine as top ten curling tongs.

Beauty Works styling tools have a blogger and celebrity following. Featuring an extra-long barrel and with temperature control features, our stylers are designed specifically for longer hair and extension users.





### WAVER

Achieve tousled tresses with the Beauty Works **Waver**, a 25mm three barrel hair waver that creates mermaid-inspired waves. The triple barrel design creates S-shaped, beachy waves on all hair lengths. Complete with carry case.



### JUMBO WAVER

Make waves for days with the **Jumbo Waver**, featuring a 32mm triple barrel design. The Jumbo Waver is designed with three, extra large barrels to give you the ultimate crease-free waves in seconds.



### PROFESSIONAL STYLER

The **Professional Styler** will give you fast, flawless, professional styling every time. Our extra-long 18.5cm ceramic wand creates Hollywood Waves that oozes retro glamour or that supermodel-approved 'I woke up like this' curl.



### SPEED STYLER

Designed to tame unruly hair into a straight, smooth style in one easy motion with the. Speed up styling time with the extra-large paddle styler, featuring a combination of high density and shorter bristles, the hot brush works through the hair to detangle as you straighten.



### FLAT IRON WAVE BAR - 25MM

The **Flat Iron Wave Bar 25mm** creates a more defined, tighter textured wave. This wave is perfect for dressing up a casual outfit using your locks!



### FLAT IRON WAVE BAR - 38MM

The **Flat Iron Wave Bar 38mm** creates a natural, loose wave for an effortless & casual style, perfect for both day & night.



### STRAIGHTENER

Style effortlessly sleek, smooth, shiny hair with The Straightener. Designed with ultra-efficient ceramic heat technology for rapid heat up and heat recovery time, for faster styling



### HAIR DRYER

Deliver ultra-fast, powerful drying for smooth, shiny results with The Hair Dryer. Control the heat for more precision with three adjustable temperature settings and two speed settings, plus a cool shot to set your style for long-lasting results.



# AERIS® DIGITAL HAIR DRYER

Empower your hair with AERIS®, an innovative digital hair dryer featuring intelligent technology for an ultra-fast, smooth blow dry experience which is smarter on strands. Fusing power, speed and precise temperature control, AERIS® is expertly engineered to deliver smooth, shiny results. Achieve sleek, polished styling without compromising the health of your hair. Reducing drying time without excessive heat damage.

Magnetic attachments with heat shield technology allow for precise drying and easier adjustment of airflow, delivering faster frizz-free styling and salon-grade results. The diffuser and nozzles can be rotated 360° so that you can control the direction of airflow to meet your styling needs. Reduce energy consumption without compromising on power and discover the future of styling. The lightweight, ergonomically balanced design runs up to a maximum of 110,000 rpm whilst using only 1200W of energy, providing powerful performance to save time and reduce energy consumption.







## PROFESSIONAL TOOLS

---

Our range of hair extensions tools offer quick and easy application, maintenance and removal solutions.

Ensure the longevity of your client's hair with our salon professional tools, designed to be used when fitting Beauty Works extensions.



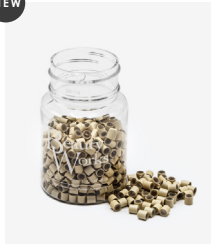


Keratin Bonds  
100/250 Pieces



Copper Micro Rings  
100/500 Rings

NEW

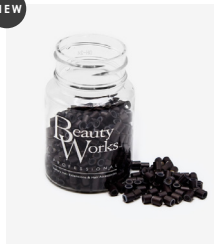


Copper Micro Rings -  
Silicone lined  
100/500 Rings



Aluminium Micro Ring  
100/500 Rings

NEW



Aluminium Micro Ring  
- silicone lined  
100/500 Rings



Nano Rings  
1000 Rings



Needle



Thread



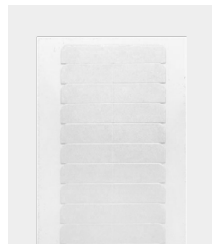
Hair Extension  
Remover



Wooden Loop  
Applicator



White Tape Roll 0.8m



Super Hold Tape Tab  
48 Pack

NEW



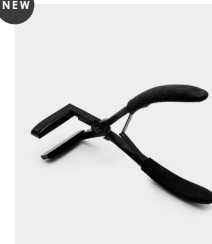
Super Hold Single  
Sided Tape Tabs -  
24 Pack

NEW



Velcro Hair Sectioning  
Grippers

NEW



NEW  
Tape Press



Nano Pliers



Stainless Steel Pliers



Tape Application  
Pliers



Nano Pliers





# MARKETING MATERIAL

Designed to support your business growth and establish your partnership with Beauty Works, discover our collection of branded marketing materials. Featuring luxury merchandising solutions to display product in-salon and POS to ensure you're maximising your profit potential with each extensions client.



Hairdrobe®



Luxury PVC Carrier Bags



Consultation Forms  
(Pack of 50)



Aftercare Booklets  
(Pack of 50)



Beauty Works Gown



COMING SOON  
Tent Cards



COMING SOON  
Branded Towels



COMING SOON  
Countertop Sachet Box



NEW

## SALON RETAIL DISPLAY STAND

Showcase Beauty Works hair extensions, styling tools and aftercare for retail with this new, customisable and compact retail stand.

Featuring a useful storage draw, 4 adjustable shelves and 2 hanging bars with hooks. This stand can be easily customised to meet your salon's unique needs and product offering. Helping to drive revenue and client awareness within the salon.

Crafted from premium stainless steel and finished in a sleek, powder-coated matte white, this stand is not only stylish but also highly durable. Optimise your salon's retail display now with this premium and practical stand.



## COLOUR DISPLAY

Ensure you're displaying merchandise in your salon with the correct branding for clients to easily see an availability of colours

### 2023 COLOUR RING

Get the Beauty Works Salon Luxury Colour Ring to offer your clients a wide selection to find the perfect match!



### LUXURY SWATCHES

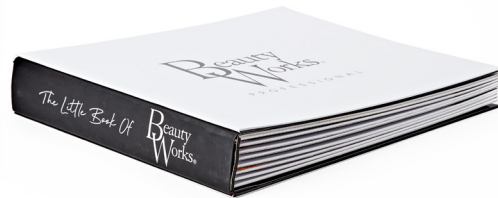
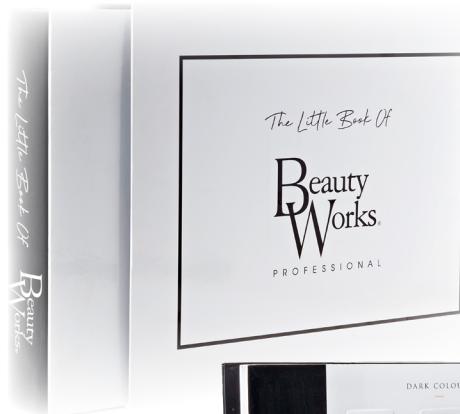
Ensure the perfect match for every client with our full range of Luxury Swatches.



NEW

### COLOUR BOOK - COMING SOON

Elevate your salon and help your clients discover their perfect hair extension colour match with the Beauty Works Colour Book.



NEW

### EXTENSION BAR

Help your clients discover their perfect hair extension colour match with the Beauty Works Extension Bar. This rotational display unit has been designed to showcase the Beauty Works luxury professional colour ring in a sleek and stylish way, elevating your salon and customer experience.

The compact display unit features a rotational bar for easy browsing with bespoke gold plated hooks and a white acrylic header to instantly catch the eye of your clients with the world-renowned Beauty Works brand name.





## COLOUR COLLECTION

---

Find the perfect colour match for your clients with our range of bespoke hair extension shades. With over 40 shades to choose from, there is a shade for everyone to enhance their natural hair with hair extensions. Choose from cool-toned, classic black hair extensions or rich chocolate brunette tones. Blondes can select from a range of warm, golden blonde hues and clean, ash blondes. We also offer a range of vibrant red hair extensions and hand-painted, rooted and balayage shades. Discover the latest hair colour trends with our curated colour collections and offer your clients our newest, luxury blends.



# RIVIERA

## COLLECTION

Enter an endless summer, with three brand new, sunkissed shades inspired by the Riviera. Experience a collection of low maintenance colours, designed to blend seamlessly for the ultimate summer bronde. Discover rich multi-tonal brondes, only available by Beauty Works.



### ST TROPEZ BLONDE

A captivating shade that seamlessly blends together sun kissed hues, creating a root stretched multi-tonal shade. This low maintenance blonde showcases a dark golden base complimented by ribbons of lighter, buttery blonde.



### SORRENTO BRONDE

A striking brunette shade designed for effortless maintenance. Embrace lighter hues with this natural-looking bronde featuring subtle dark roots blending into gentle, cool toned blonde highlights.



### AMALFI BLONDE

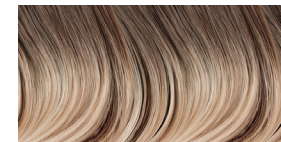
A multi-tonal ash bronde, this cool-toned colour features a natural root blending into subtle strands of icy highlights. A fusion of cool, smoked tones meld effortlessly against a darker base for the ultimate ashed bronde blend.



# Chocolatière

## COLLECTION

Meet the Chocolatière collection, four rich, decadent shades, hand painted onto the finest quality cuticle hair to create multi-dimensional blends that melt together.



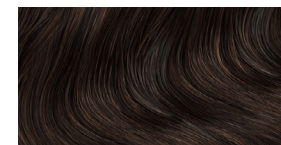
### WALNUT

A hue of natural blondes mixed with brown for cool undertones and a dark blonde root stretch.



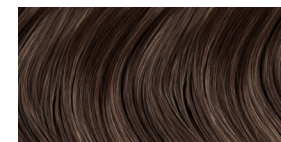
### DARK CHOCOLATE

Sought-after and expensive, dark chocolate gives depth and richness in every strand.



### ESPRESSO BROWN

A cool-toned brunette shade that is deep and rich while maintaining an incredible shine.



### HONEYCOMB

A beautiful blend of chocolate tones with golden grain hues for more subtle pops of highlights.



# BEAUTY WORKS COLOUR COLLECTION

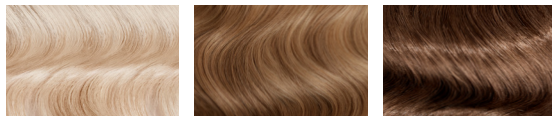
## LIGHT SHADES



Amber Cherry Scarlett Chocolate Blondette

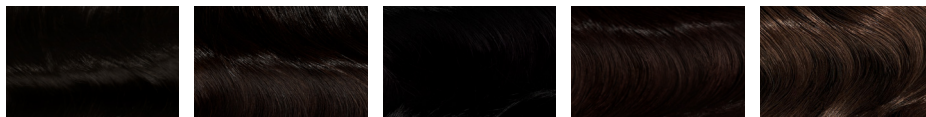


Honey Blonde Blonde Bombshell Bohemian Blonde California Blonde Champagne Blonde



LA Blonde Tanned Blonde Oak

## DARK COLOURS



Natural Black Ebony Jet Set Black Raven Brazilia



Hot Toffee Golden Brown Caramel Chocolatière Collection - Dark Chocolate

## SPECIAL COLOURS



Silver Vintage Blonde Pure Platinum Barley Blonde Iced Blonde



Bergen Blonde Brond'mbre Mocha Melt Caramelized Dubai



Scandinavian Blonde Viking Blonde High Contrast Warm Ivory Ashed Brown



Calabazas Sunset Boulevard Melrose Beauty Works X Molly-Mae hair colour collection Cappuccino



Neutral Blonde Santa Barbara Santa Monica Chocolatière Collection - Espresso Brown Chocolatière Collection - Honeycomb



Chocolatière Collection - Walnut Riviera Collection - St Tropez Blonde Riviera Collection - Sorrento Blonde Riviera Collection - Amalfi Blonde

\*INVISI® & CELEBRITY CHOICE® COLOURS VARY - REFER TO RELEVANT COLOUR RINGS



# COLOUR COLLECTION

## LIGHT COLOURS

								
	Amber	Cherry	Scarlet	Chocolate	Blondette	Honey Blonde	Blonde Bombshell	Bohemian Blonde
SLIMLINE® TAPE	✓	✓		✓	✓	✓	✓	✓
INVISI® TAPE				✓		✓		✓
NANOBOND®	✓	✓	✓	✓	✓	✓	✓	✓
STICK TIPS	✓	✓	✓	✓	✓	✓	✓	✓
FLAT TIPS	✓	✓	✓	✓	✓	✓	✓	✓
DOUBLE HAIR SET				✓	✓	✓		✓
DELUXE CLIP-INS		✓		✓	✓	✓		✓
SUPER SLEEK INVISI® PONY				✓		✓		✓
CELEBRITY CHOICE® WEFT	✓	✓	✓	✓	✓	✓	✓	✓
GOLD DOUBLE WEFT	✓			✓	✓	✓	✓	✓
GOLD FLAT TRACK® WEFT	✓			✓	✓	✓	✓	✓
HALF-UP HAIR SET	✓					✓		✓

# COLOUR COLLECTION

## LIGHT COLOURS

## DARK COLOURS

								
	California Blonde	Champagne Blonde	LA Blonde	Tanned Blonde	Oak	Natural Black	Ebony	Jet Set Black
SLIMLINE® TAPE	✓	✓	✓		✓	✓	✓	✓
INVISI® TAPE		✓	✓			✓	✓	✓
NANOBOND®	✓	✓	✓	✓	✓	✓	✓	✓
STICK TIPS	✓	✓	✓	✓	✓	✓	✓	✓
FLAT TIPS	✓	✓	✓	✓	✓	✓	✓	✓
DOUBLE HAIR SET	✓	✓	✓			✓	✓	✓
DELUXE CLIP-INS	✓	✓	✓				✓	✓
SUPER SLEEK INVISI® PONY	✓	✓	✓			✓	✓	✓
CELEBRITY CHOICE® WEFT	✓	✓	✓			✓	✓	✓
GOLD DOUBLE WEFT	✓	✓	✓		✓	✓	✓	✓
GOLD FLAT TRACK® WEFT	✓	✓	✓			✓	✓	✓
HALF-UP HAIR SET		✓				✓	✓	✓




# COLOUR COLLECTION

## DARK COLOURS

	 Raven	 Brazilia	 Hot Toffee	 Golden Brown	 Caramel	 The Chocolatière collection Dark Chocolate
SLIMLINE® TAPE	✓	✓	✓	✓	✓	✓
INVISI® TAPE	✓	✓	✓			
NANOBOND®	✓	✓	✓	✓	✓	✓
STICK TIPS	✓	✓	✓	✓	✓	✓
FLAT TIPS	✓	✓	✓	✓	✓	✓
DOUBLE HAIR SET	✓	✓	✓		✓	✓
DELUXE CLIP-INS	✓		✓		✓	✓
SUPER SLEEK INVISI® PONY	✓	✓	✓		✓	✓
CELEBRITY CHOICE® WEFT	✓	✓	✓	✓	✓	✓
GOLD DOUBLE WEFT	✓	✓	✓		✓	✓
GOLD FLAT TRACK® WEFT	✓	✓	✓		✓	✓
HALF-UP HAIR SET	✓		✓			✓

# COLOUR COLLECTION

## SPECIAL COLOURS

	 Silver	 Vintage	 Pure Platinum	 Barley Blonde	 Iced Blonde	 Bergen Blonde	 Brond'mbre	 Mocha Melt
SLIMLINE® TAPE	✓		✓	✓	✓	✓	✓	✓
INVISI® TAPE			✓		✓		✓	✓
NANOBOND®	✓	✓	✓	✓	✓	✓	✓	✓
STICK TIPS	✓	✓	✓	✓	✓	✓	✓	✓
FLAT TIPS	✓	✓	✓	✓	✓	✓	✓	✓
DOUBLE HAIR SET	✓	✓	✓	✓	✓	✓	✓	✓
DELUXE CLIP-INS	✓	✓	✓	✓	✓		✓	✓
SUPER SLEEK INVISI® PONY	✓		✓	✓	✓		✓	✓
CELEBRITY CHOICE® WEFT	✓	✓	✓	✓	✓		✓	✓
GOLD DOUBLE WEFT	✓	✓	✓	✓	✓		✓	✓
GOLD FLAT TRACK® WEFT	✓	✓	✓	✓	✓		✓	✓
HALF-UP HAIR SET			✓	✓	✓		✓	✓



# COLOUR COLLECTION

## SPECIAL COLOURS

								
SLIMLINE® TAPE	✓	✓	✓	✓	✓	✓	✓	✓
INVISI® TAPE		✓	✓					
NANOBOND®	✓	✓	✓	✓	✓	✓	✓	✓
STICK TIPS	✓	✓	✓	✓	✓	✓	✓	✓
FLAT TIPS	✓	✓	✓	✓	✓	✓	✓	✓
DOUBLE HAIR SET	✓	✓	✓	✓	✓	✓	✓	✓
DELUXE CLIP-INS		✓	✓					✓
SUPER SLEEK INVISI® PONY		✓	✓	✓	✓			✓
CELEBRITY CHOICE® WEFT	✓	✓	✓	✓				
GOLD DOUBLE WEFT	✓	✓	✓	✓	✓	✓	✓	✓
GOLD FLAT TRACK® WEFT	✓	✓	✓	✓		✓		✓
HALF-UP HAIR SET		✓	✓					

# COLOUR COLLECTION

## SPECIAL COLOURS

								
SLIMLINE® TAPE	✓	✓	✓					✓
INVISI® TAPE	✓	✓		✓	✓	✓	✓	
NANOBOND®	✓	✓	✓					✓
STICK TIPS	✓	✓	✓					✓
FLAT TIPS	✓	✓	✓					✓
DOUBLE HAIR SET	✓	✓	✓					✓
DELUXE CLIP-INS	✓	✓	✓					✓
SUPER SLEEK INVISI® PONY	✓	✓	✓					✓
CELEBRITY CHOICE® WEFT			✓					✓
GOLD DOUBLE WEFT	✓	✓	✓					✓
GOLD FLAT TRACK® WEFT	✓	✓	✓					✓
HALF-UP HAIR SET	✓	✓	✓					✓



# COLOUR COLLECTION

## SPECIAL COLOURS

	 The Chocolatière collection Honeycomb	 The Chocolatière collection Walnut	 The Riviera collection St Tropez Blonde	 The Riviera collection Sorrento Bronde	 The Riviera collection Amalfi Blonde
SLIMLINE® TAPE	✓	✓	✓	✓	✓
INVISI® TAPE			✓	✓	✓
NANOBOND®	✓	✓	✓	✓	✓
STICK TIPS	✓	✓	✓	✓	✓
FLAT TIPS	✓	✓	✓	✓	✓
DOUBLE HAIR SET	✓	✓	✓	✓	✓
DELUXE CLIP-INS	✓	✓	✓	✓	✓
SUPER SLEEK INVISI® PONY	✓	✓			
CELEBRITY CHOICE® WEFT	✓	✓	✓	✓	✓
GOLD DOUBLE WEFT	✓	✓	✓	✓	✓
GOLD FLAT TRACK® WEFT	✓	✓	✓	✓	✓
HALF-UP HAIR SET	✓	✓			







[BEAUTYWORKS.COM](http://BEAUTYWORKS.COM)

[TRADE@BEAUTYWORKS.CO.UK](mailto:TRADE@BEAUTYWORKS.CO.UK) | 0161 485 3602

[@beautyworksprofessional](https://www.instagram.com/beautyworksprofessional)